

Request For Quotation

Order the parts you need from our real-time inventory database. Simply complete a request for quotation form with your part information and a sales representative will respond to you with price and availability.

[Request For Quotation](#)

Your free datasheet starts on the next page.

More datasheets and data books are available from our homepage: <http://www.datasheetarchive.com>

SNAP RIVET (SR)



- To install, press head and legs; lock into position
- Pull head to release
- No tools required
- Material: Nylon 6, RMS-28
- Colour: Black(BK), White(W), Green(GN), Yellow(YL), Red (RD) and Blue(BL); other colours available by special order
- Standard Pack: 1000 per bag

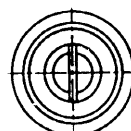
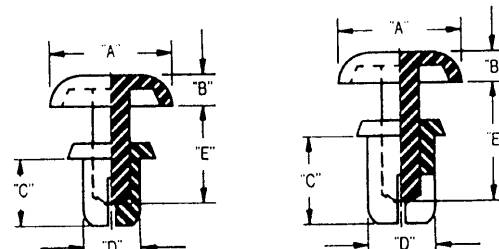
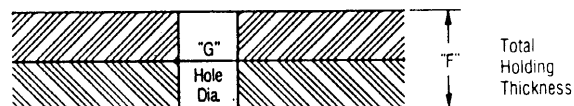


Fig. 1

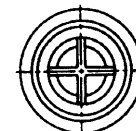


Fig. 2

SR-5000 Series Only



Fig. 3

									inches (mm)						
Part #	Hole Dia. "G"	Thickness "F"	"A"	"B"	"C"	"D"	"E"	Fig. #	Mat'l						
SR-2024	.083 (2.1)-.087 (2.2)	.024-.047 (0.6-1.2)	.17 (4.2)	0.47 (1.2)	.09 (2.4)	.08 (2.0)	.15 (3.8)	1	NYLON 6/6						
SR-2032		.051-.079 (1.3-2.0)			.13 (3.2)		.22 (5.5)								
SR-2040		.083-.110 (2.1-2.8)			.16 (4.0)										
SR-2048		.114-.142 (2.9-3.6)			.19 (4.8)										
SR-2632	.102 (2.6)-.106 (2.7)	.039-.079 (1.0-2.0)	.20 (5.0)	.055 (1.4)	.13 (3.2)	.10 (2.6)	.18 (4.5)		2	NYLON 6					
SR-2642		.083-.118 (2.1-3.0)			.17 (4.2)		.24 (6.1)								
SR-2648		.106-.142 (2.7-3.6)			.19 (4.8)										
SR-2655		.134-.169 (3.4-4.3)			.22 (5.5)										
SR-3035	.122 (3.1)-.126 (3.2)	.039-.079 (1.0-2.0)	.25 (6.4)	.063 (1.6)	.14 (3.5)	.12 (3.0)	.20 (5.1)				2	NYLON 6			
SR-3045		.079-.118 (2.0-3.0)			.18 (4.5)		.24 (6.1)								
SR-3055		.118-.157 (3.0-4.0)			.22 (5.5)								.28 (7.1)		
SR-3065		.157-.197 (4.0-5.0)			.26 (6.5)		.35 (9.0)								
SR-3080	.142 (3.6)-.146 (3.7)	.197-.256 (5.0-6.5)	.32 (8.0)	.071 (1.8)	.31 (8.0)	.16 (4.0)		.20 (5.1)					2	NYLON 6	
SR-3535		.047-.083 (1.2-2.1)			.14 (3.5)		.24 (6.1)								
SR-3545		.087-.122 (2.2-3.1)			.18 (4.5)			.28 (7.1)							
SR-3550		.106-.142 (2.7-3.6)			.20 (5.0)		.35 (9.0)								
SR-3555	.157 (4.0)-.161 (4.1)	.126-.161 (3.2-4.1)	.35 (9.0)	.087 (2.2)	.22 (5.5)	.20 (5.0)		.24 (6.1)	2	NYLON 6					
SR-3570		.177-.217 (4.5-5.5)			.28 (7.0)		.33 (8.5)								
SR-4050		.098-.138 (2.5-3.5)			.30 (7.5)			.41 (10.5)							
SR-4060		.138-.177 (3.5-4.5)			.33 (8.5)		.47 (12.0)								
SR-4070	.197 (5.0)-.201 (5.1)	.177-.217 (4.5-5.5)	.35 (9.0)	.087 (2.2)	.28 (7.0)	.16 (4.0)		.26 (6.5)			2	NYLON 6			
SR-4080		.217-.256 (5.5-6.5)			.31 (8.0)		.39 (10.0)								
SR-4100		.295-.335 (7.5-8.5)			.37 (9.5)			.41 (10.5)							
SR-5045		.236 (6.0)-.240 (6.1)			.059-.098 (1.5-2.5)		.47 (12.0)								.098 (2.5)
SR-5055	.098-.138 (2.5-3.5)		.22 (5.5)	.33 (8.5)											
SR-5065	.138-.177 (3.5-4.5)		.26 (6.5)		.37 (9.5)										
SR-5075	.177-.217 (4.5-5.5)		.30 (7.5)	.41 (10.5)											
SR-5085	.236 (6.0)-.240 (6.1)	.217-.256 (5.5-6.5)	.35 (9.0)		.087 (2.2)	.33 (8.5)	.20 (5.0)	.41 (10.5)					2	NYLON 6	
SR-5095		.256-.295 (6.5-7.5)		.37 (9.5)		.47 (12.0)									
SR-5105		.295-.335 (7.5-8.5)		.41 (10.5)				.39 (10.0)							
SR-6060		.236 (6.0)-.240 (6.1)		.098-.157 (2.5-4.0)		.47 (12.0)			.118 (3.0)	.24 (6.0)					.24 (6.0)
SR-6080	.138-.217 (3.5-5.5)		.31 (8.0)	.39 (10.0)											

SNAP-RIVETS, HEAT RESISTANT (SR, HR)

SNAP-RIVETS, HEAT RESISTANT (SR, HR)									inches (mm)
Part #	Hole Dia. "G"	Thickness "F"	"A"	"B"	"C"	"D"	"E"	Fig. #	Mat'l
SRHR-3045	.122 (3.1)-.126 (3.2)	.079-.118 (2.0-3.0)	.25 (6.4)	.063 (1.6)	.18 (4.5)	.12 (3.0)	.24 (6.1)	1	NYLON 4/6
SRHA-3055		.118-.157 (3.0-4.0)			.22 (5.5)		.28 (7.1)		
SRHA-3065		.157-.197 (4.0-5.0)			.26 (6.5)		.35 (9.0)		
SRHA-3535	-142 (3.6)-.146 (3.7)	.047-.083 (1.2-2.1)			.14 (3.5)	.20 (5.1)	2		
SRHA-3545		.087-.122 (2.2-3.1)				.18 (4.5)			
SRHA-4050	.157 (4.0)-.161 (4.1)	.098-.138 (2.5-3.5)	.32 (8.0)	.071 (1.8)	.20 (5.0)	.16 (4.0)	.28 (7.0)	2	
SRHA-4050		.138-.177 (3.5-4.5)			.24 (6.0)		.35 (9.0)		
SRHA-4070		.177-.217 (4.5-5.5)			.28 (7.0)				
SRHA-4080		.217-.256 (5.5-6.5)			.31 (8.0)				

SR-2632		.039-.079 (1.0-2.0)			.13 (3.2)		.18 (4.5)		
SR-2642	.102 (2.6)-.106 (2.7)	.083-.118 (2.1-3.0)	.20 (5.0)	.055 (1.4)	.17 (4.2)	.10 (2.6)			
SR-2648		.106-.142 (2.7-3.6)			.19 (4.8)		.24 (6.1)		
SR-2655		.134-.169 (3.4-4.3)			.22 (5.5)				
SR-3035		.039-.079 (1.0-2.0)			.14 (3.5)		.20 (5.1)		
SR-3045		.079-.118 (2.0-3.0)			.18 (4.5)		.24 (6.1)		
SR-3055	.122 (3.1)-.126 (3.2)	.118-.157 (3.0-4.0)			.22 (5.5)	.12 (3.0)	.28 (7.1)		
SR-3065		.157-.197 (4.0-5.0)			.26 (6.5)		.35 (9.0)		
SR-3080		.197-.256 (5.0-6.5)			.31 (8.0)		.20 (5.1)		
SR-3535		.047-.083 (1.2-2.1)	.25 (6.4)	.063 (1.6)	.14 (3.5)		.24 (6.1)		
SR-3545		.087-.122 (2.2-3.1)			.18 (4.5)				
SR-3550	.142 (3.6)-.146 (3.7)	.106-.142 (2.7-3.6)			.20 (5.0)	.14 (3.5)	.28 (7.1)		
SR-3555		.126-.161 (3.2-4.1)			.22 (5.5)		.35 (9.0)		
SR-3570		.177-.217 (4.5-5.5)			.28 (7.0)				
SR-4050		.098-.138 (2.5-3.5)			.20 (5.0)		.28 (7.0)		
SR-4060		.138-.177 (3.5-4.5)			.24 (6.0)				
SR-4070	.157 (4.0)-.161 (4.1)	.177-.217 (4.5-5.5)	.32 (8.0)	.071 (1.8)	.28 (7.0)	.16 (4.0)	.35 (9.0)		
SR-4080		.217-.256 (5.5-6.5)			.31 (8.0)				
SR-4100		.295-.335 (7.5-8.5)			.39 (10.0)		.43 (11.0)		
SR-5045		.059-.098 (1.5-2.5)			.18 (4.5)		.26 (6.5)		
SR-5055		.098-.138 (2.5-3.5)			.22 (5.5)				
SR-5065		.138-.177 (3.5-4.5)	.35 (9.0)	.087 (2.2)	.26 (6.5)	.20 (5.0)	.33 (8.5)		
SR-5075	.197 (5.0)-.201 (5.1)	.177-.217 (4.5-5.5)			.30 (7.5)		.41 (10.5)		
SR-5085		.217-.256 (5.5-6.5)	See Fig. #3		.33 (8.5)				
SR-5095		.256-.295 (6.5-7.5)			.37 (9.5)		.47 (12.0)		
SR-5105		.295-.335 (7.5-8.5)			.41 (10.5)				
SR-6060		.098-.157 (2.5-4.0)			.24 (6.0)	.24 (6.0)	.35 (9.0)		
SR-6080	.236 (6.0)-.240 (6.1)	.138-.217 (3.5-5.5)	.47 (12.0)	.098 (2.5)	.31 (8.0)	.24 (6.0)	.39 (10.0)		

NYLON
6

SNAP-RIVETS, HEAT RESISTANT (SR, HR)

inches (mm)

Part #	Hole Dia. "G"	Thickness "F"	"A"	"B"	"C"	"D"	"E"	Fig. #	Mat'l
SRHR-3045		.079-.118 (2.0-3.0)			.18 (4.5)	.12 (3.0)	.24 (6.1)	1	
SRHA-3055	.122 (3.1)-.126 (3.2)	.118-.157 (3.0-4.0)			.22 (5.5)		.28 (7.1)		
SRHA-3065		.157-.197 (4.0-5.0)	.25 (6.4)	.063 (1.6)	.26 (6.5)	.14 (3.5)	.20 (5.1)		NYLON
SRHA-3535		.047-.083 (1.2-2.1)			.14 (3.5)		.24 (6.1)		4/6
SRHA-3545	.142 (3.6)-.146 (3.7)	.087-.122 (2.2-3.1)			.18 (4.5)				
SRHA-4050		.098-.138 (2.5-3.5)			.20 (5.0)		.28 (7.0)	2	
SRHA-4050		.138-.177 (3.5-4.5)			.24 (6.0)	.16 (4.0)			
SRHA-4070	.157 (4.0)-.161 (4.1)	.177-.217 (4.5-5.5)	.32 (8.0)	.071 (1.8)	.28 (7.0)		.35 (9.0)		
SRHA-4080		.217-.256 (5.5-6.5)			.31 (8.0)				



- To install, press head and legs; lock into position
- Pull head to release
- No tools required
- Material: Nylon 6, RMS-28
- Colour: Black(BK), White(W), Green(GN), Yellow(YL), Red (RD) and Blue(BL); other colours available by special order
- Standard Pack: 1000 per bag

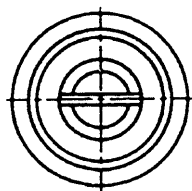
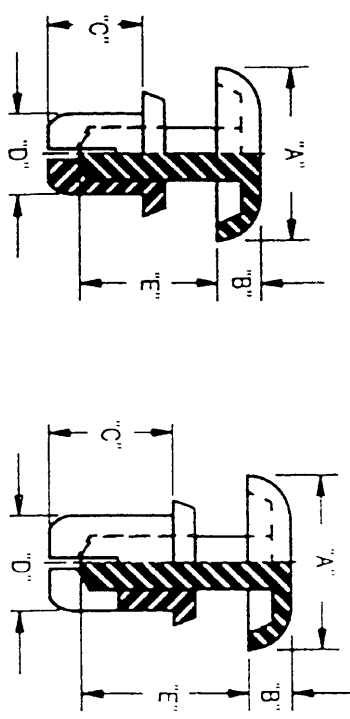
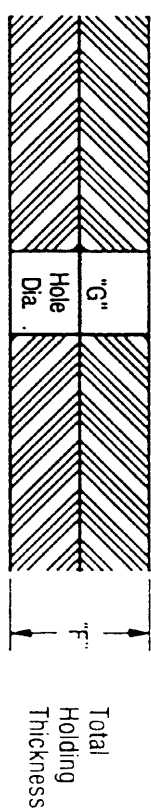


Fig. 1

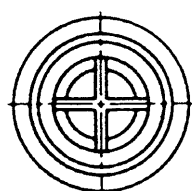


Fig. 2

SR-5000 Series Only



Fig. 3

Part #	Hole Dia. "G"	Thickness "F"	"A"	"B"	"C"	"D"	"E"	Fig. #	Mat'l
SR-2024	.083 (2.1) - .087 (2.2)	.024-.047 (0.6-1.2)	.17 (4.2)	0.47 (1.2)	.09 (2.4)	.08 (2.0)	.15 (3.8)	1	NYLON 6/6
SR-2032		.051-.079 (1.3-2.0)			.13 (3.2)		.22 (5.5)		
SR-2040		.083-.110 (2.1-2.8)			.16 (4.0)		.18 (4.5)		
SR-2048		.114-.142 (2.9-3.6)			.19 (4.8)		.24 (6.1)		
SR-2632	.102 (2.6) - .106 (2.7)	.039-.079 (1.0-2.0)	.20 (5.0)	.055 (1.4)	.13 (3.2)	.10 (2.6)	.18 (4.5)	1	
SR-2642		.083-.118 (2.1-3.0)			.17 (4.2)		.20 (5.1)		
SR-2648		.106-.142 (2.7-3.6)			.19 (4.8)		.24 (6.1)		
SR-2655		.134-.169 (3.4-4.3)			.22 (5.5)				
SR-3035		.039-.079 (1.0-2.0)			.14 (3.5)				
SR-3045		.079-.118 (2.0-3.0)			.18 (4.5)		.24 (6.1)		

inches (mm)