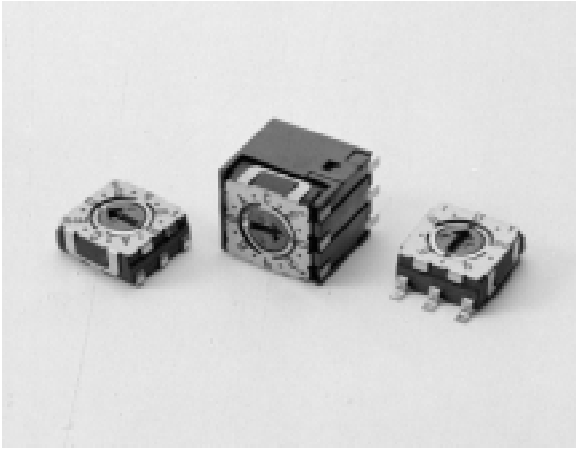


# Model S-7000

## Surface Mount Code Switch 7 mm Square

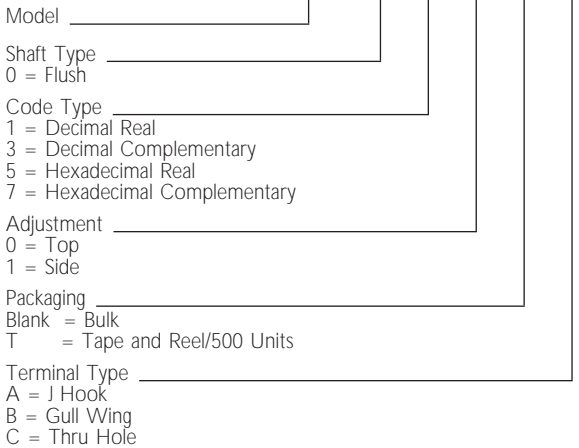


### Features

- Hexadecimal or Decimal to Binary
- Sealed to Allow for Automatic Processing
- Gull Wing and J Lead or Leaded
- Highly Automated Assembly
- Bulk or Tape and Reel Packaging

### Part Number

S-7 0 1 0 T A



### Marking

Units Marked With Two Digit Date Code, Mark for Complementary Code and Switch Position Marks

### SPECIFICATIONS

#### General

Operating Temp. Range	: -25°C TO +70°C
Storage Temp. Range	: -25°C TO +70°C
Sealing Method	: O Ring Sealed

#### Electrical

Contact Rating	
Non-Switching	: 100 mA @ 50 VDC max.
Switching	: 100 mA @ 5 VDC max.
Contact Resistance	: 100 mΩ max. @ 1KHz, 20 mV
Insulation Resistance	: 100 MΩ min @ 100 VDC
Dielectric Strength	: 1 mA max. 250 VAC @ 50 Hz For 60 Sec.

#### Mechanical

Shaft Torque	: 200 g-cm (2.78 oz-in) max.
Number Of Positions	: 10 (Decimal), 16 (Hex)
Step Angle	: 36° (Decimal), 22.5° (Hex)
Rotational Life	: 10,000 Steps min.

#### Environmental

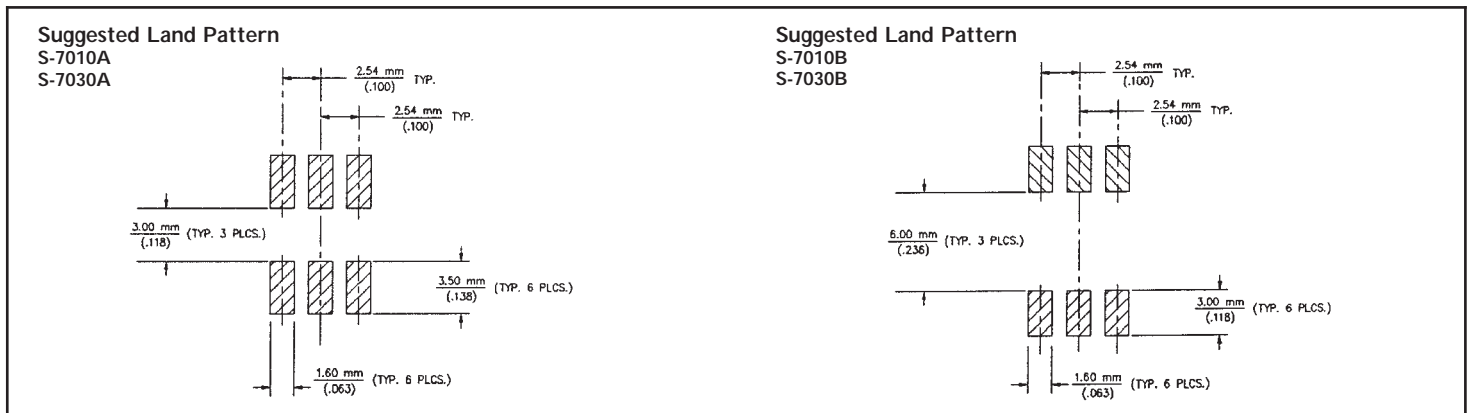
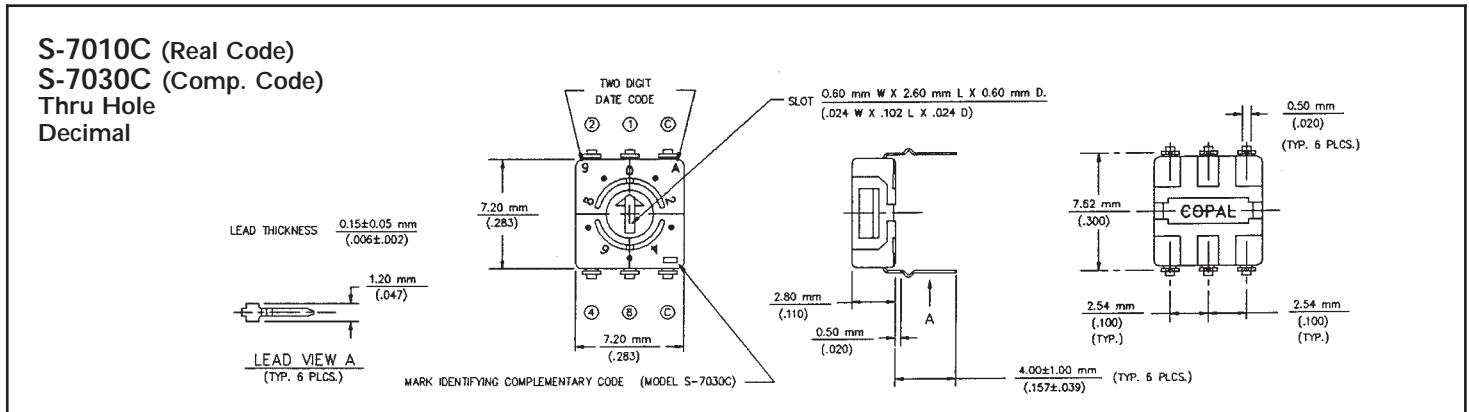
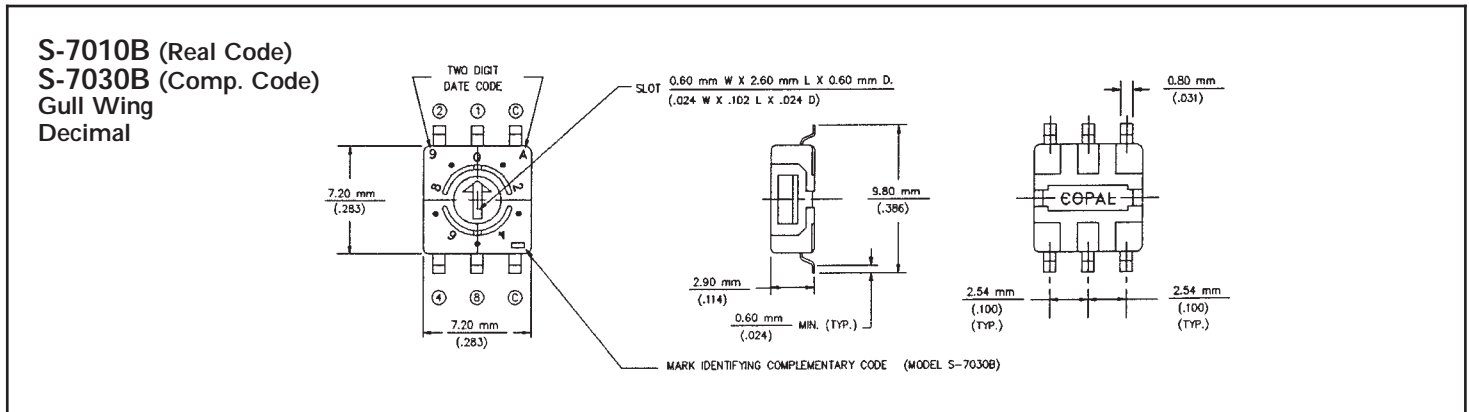
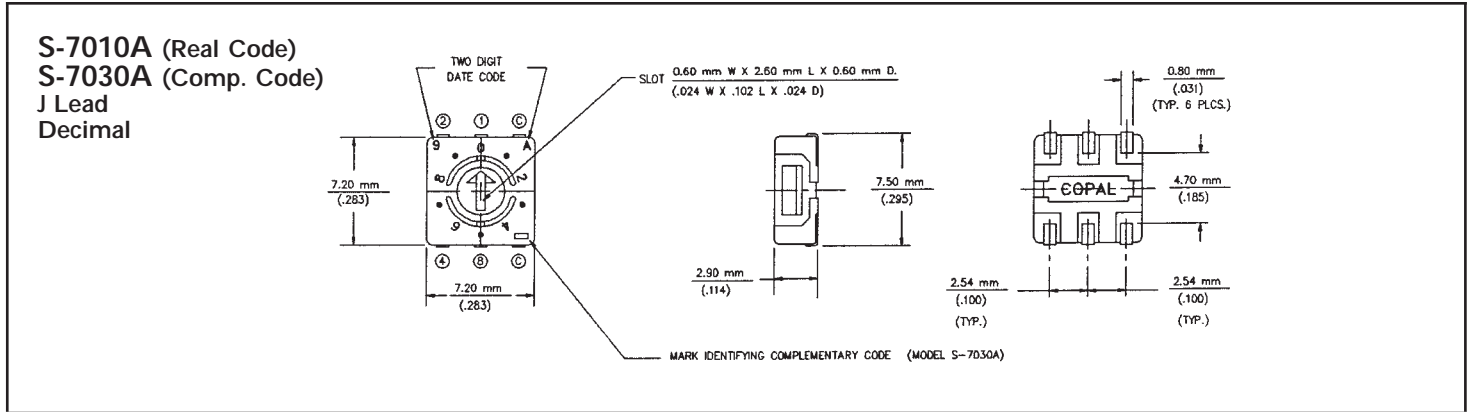
<b>Thermal Shock:</b> (-25°C to +70°C, 30 min Dwell, 5 Cycles)	See Criteria Note Below
<b>Humidity:</b> (90 - 95% RH, 40°C, 240 Hrs.)	See Criteria Note Below
<b>Low Temp. Storage:</b> (-25°C, 96 Hrs.)	See Criteria Note Below
<b>High Temp. Storage:</b> (70°C, 96 Hrs.)	See Criteria Note Below
<b>Rotational Life:</b> (10,000 Steps @ 0 Load or 100 mA, 5 VDC)	See Criteria Note Below
<b>Soldering Heat:</b> (260°C, 10 Sec.)	See Criteria Note Below
<b>Mechanical Shock:</b> (50 g, 11 mS, Sawtooth, 6 Axes, 3 Cycles)	Contact Bounce 0.1 mS max.
<b>Vibration:</b> (10 g, .060 DA, 10 to 500 Hz., 2 Hrs, 3 Axes)	Contact Bounce 0.1 mS max.
<b>Immersion:</b>	Fluorocarbon Liquid, 85°C, 1 min. No Leaks

#### Criteria Note:

Contact Resistance Not Greater Than 100 mΩ  
 Insulation Resistance Not Less Than 100 MΩ (10 MΩ Humidity)  
 Shaft Torque Not Greater Than 200 g-cm

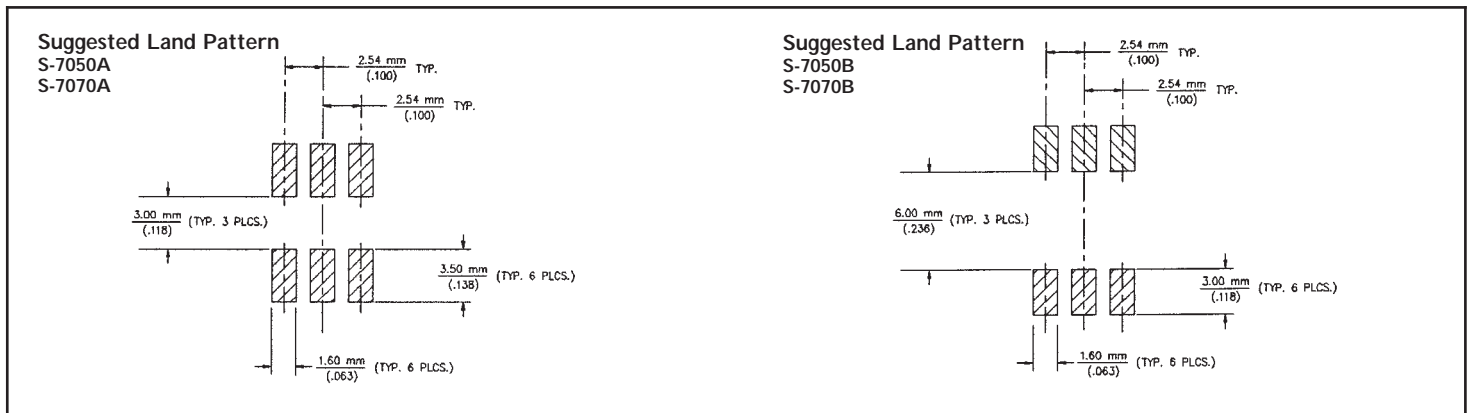
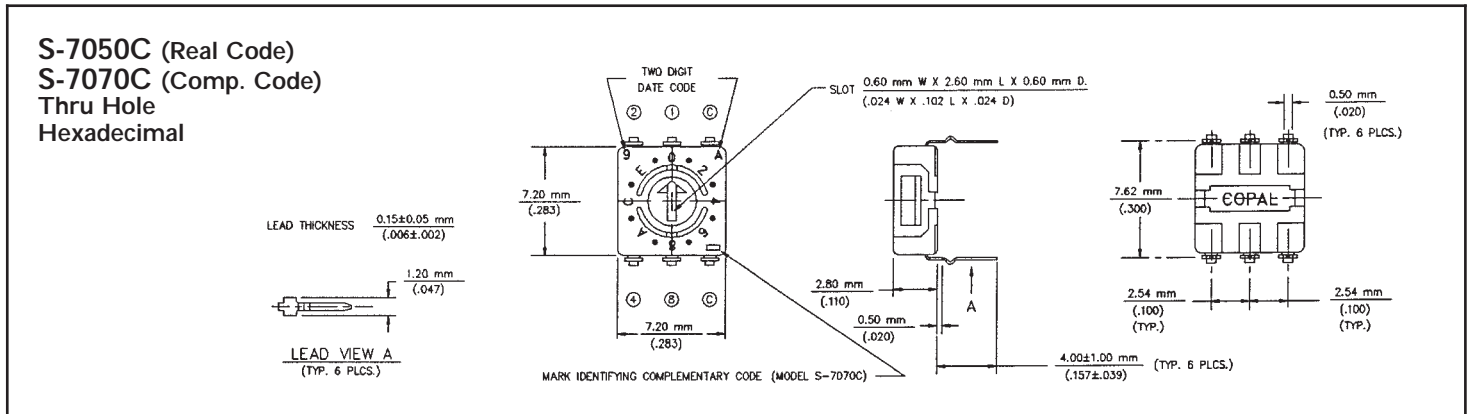
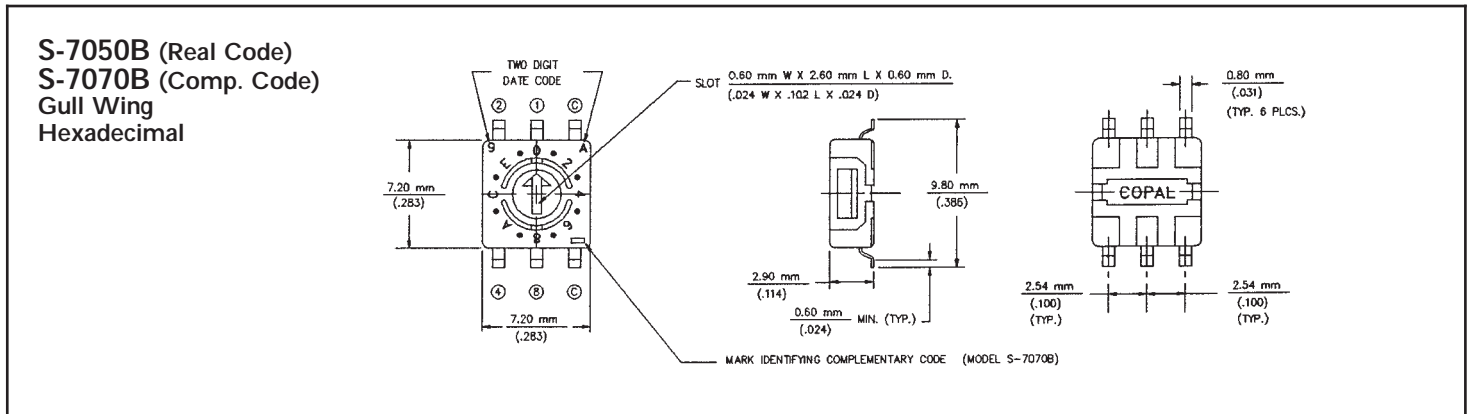
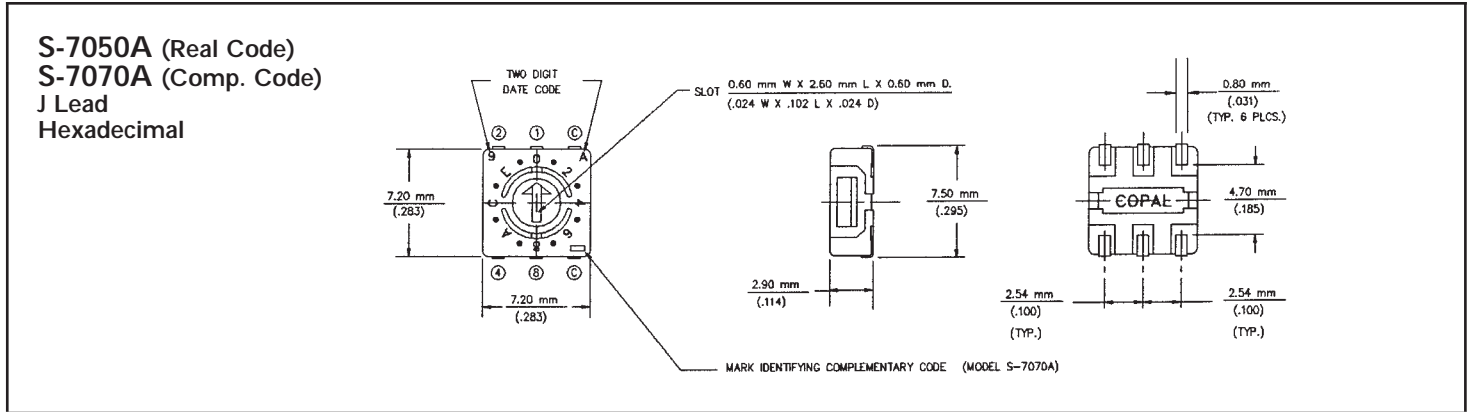
# S-7000

Sealed Surface Mount Coded Switch



# S-7000

Sealed Surface Mount Coded Switch



# S-7000

Sealed Surface Mount Coded Switch

**S-7011A (Real Code)**  
**S-7031A (Comp. Code)**  
**J Lead**  
**Decimal**  
**Side Adjust**

MARK IDENTIFYING COMPLEMENTARY CODE (MODEL S-7031A)

7.20 mm (.283)

8.30 mm (.327)

DATE CODE TWO DIGIT

SLOT 0.60mm W X 2.60mm L X 0.60mm D (.024 W X .102 L X .024 D)

7.80 mm (.307)

MIN. 1.00 mm (.039)

0.80 mm (.031)

7.10 mm (.279)

MIN. 1.00 mm (.039)

2.54 mm (.100)

2.54 mm (.100)

BOTTOM VIEW

Available in bulk and tape and reel

**S-7011B (Real Code)**  
**S-7031B (Comp. Code)**  
**Gull Wing**  
**Decimal**  
**Side Adjust**

MARK IDENTIFYING COMPLEMENTARY CODE (MODEL S-7031B)

7.20 mm (.283)

8.30 mm (.327)

DATE CODE TWO DIGIT

SLOT 0.60mm W X 2.60mm L X 0.60mm D (.024 W X .102 L X .024 D)

7.80 mm (.307)

MIN. 1.40 mm (.055)

0.40 mm (.016)

7.80 mm (.307)

MIN. 1.40 mm (.055)

6-0.80 (.031)  
t=0.15 (.006)

2.54 mm (.100)

2.54 mm (.100)

BOTTOM VIEW

Available in bulk and tape and reel

**S-7011C (Real Code)**  
**S-7031C (Comp. Code)**  
**Thru Hole**  
**Decimal**  
**Side Adjust**

MARK IDENTIFYING COMPLEMENTARY CODE (MODEL S-7031C)

7.20 mm (.283)

8.30 mm (.327)

3.50 mm (.138)

DATE CODE TWO DIGIT

SLOT 0.60mm W X 2.60mm L X 0.60mm D (.024 W X .102 L X .024 D)

7.80 mm (.307)

1.80 mm (.071)

5.08 mm (.200)

2.54 mm (.100)

2.54 mm (.100)

BOTTOM VIEW

Available in bulk

**Suggested Land Pattern**  
**S-7011A**  
**S-7031A**

2.54 mm (.100) TYP.

2.54 mm (.100) TYP.

4.30 mm (.169) (TYP. 3 PLCS.)

1.90 mm (.075) (TYP. 6 PLCS.)

1.20 mm (.047) (TYP. 6 PLCS.)

**Suggested Land Pattern**  
**S-7011B**  
**S-7031B**

2.54 mm (.100) TYP.

2.54 mm (.100) TYP.

4.30 mm (.169) (TYP. 3 PLCS.)

2.30 mm (.090) (TYP. 6 PLCS.)

1.20 mm (.047) (TYP. 6 PLCS.)

# S-7000

Sealed Surface Mount Coded Switch

**S-7051A (Real Code)**  
**S-7071A (Comp. Code)**  
**Side Adjust**  
**Hexadecimal Switch**  
**J-Lead**

MARK IDENTIFYING COMPLEMENTARY CODE (MODEL S-7071A)

7.20 mm (.283)

8.30 mm (.327)

DATE CODE TWO DIGIT

SLOT 0.60mm W X 2.60mm L X 0.60mm D (.024 W X .102 L X .024 D)

7.80 mm (.307)

MIN. 1.00 mm (.039)

0.80 mm (.031)

7.10 mm (.279)

MIN. 1.00 mm (.039)

2.54 mm (.100)

2.54 mm (.100)

ROTOR

BOTTOM VIEW

Available in bulk and tape and reel

**S-7051B (Real Code)**  
**S-7071B (Comp. Code)**  
**Side Adjust**  
**Hexadecimal Switch**  
**Gull-Wing**

MARK IDENTIFYING COMPLEMENTARY CODE (MODEL S-7071B)

7.20 mm (.283)

8.30 mm (.327)

DATE CODE TWO DIGIT

SLOT 0.60mm W X 2.60mm L X 0.60mm D (.024 W X .102 L X .024 D)

7.80 mm (.307)

MIN. 1.40 mm (.055)

0.40 mm (.016)

7.80 mm (.307)

MIN. 1.40 mm (.055)

6-0.80 (.031) (-0.15 (.006))

2.54 mm (.100)

2.54 mm (.100)

ROTOR

BOTTOM VIEW

Available in bulk and tape and reel

**S-7051C (Real Code)**  
**S-7071C (Comp. Code)**  
**Side Adjust**  
**Hexadecimal Switch**  
**Thru-Hole**

MARK IDENTIFYING COMPLEMENTARY CODE (MODEL S-7071C)

7.20 mm (.283)

8.30 mm (.327)

3.50 mm (.138)

DATE CODE TWO DIGIT

SLOT 0.60mm W X 2.60mm L X 0.60mm D (.024 W X .102 L X .024 D)

7.80 mm (.307)

1.80 mm (.071)

5.08 mm (.200)

2.54 mm (.100)

2.54 mm (.100)

ROTOR

BOTTOM VIEW

Available in bulk

**Suggested Land Pattern**  
**S-7051A**  
**S-7071A**

2.54 mm (.100) TYP.

2.54 mm (.100) TYP.

4.30 mm (.169) (TYP. 3 PLCS.)

1.90 mm (.075) (TYP. 6 PLCS.)

1.20 mm (.047) (TYP. 6 PLCS.)

**Suggested Land Pattern**  
**S-7051B**  
**S-7071B**

2.54 mm (.100) TYP.

2.54 mm (.100) TYP.

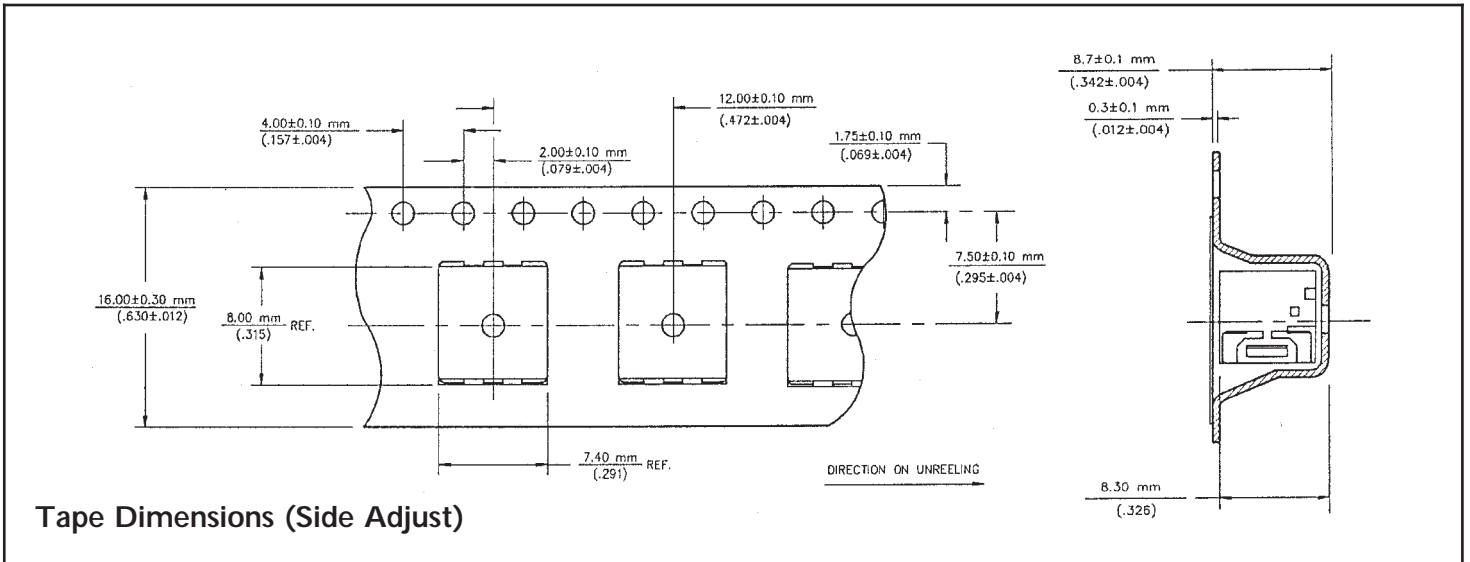
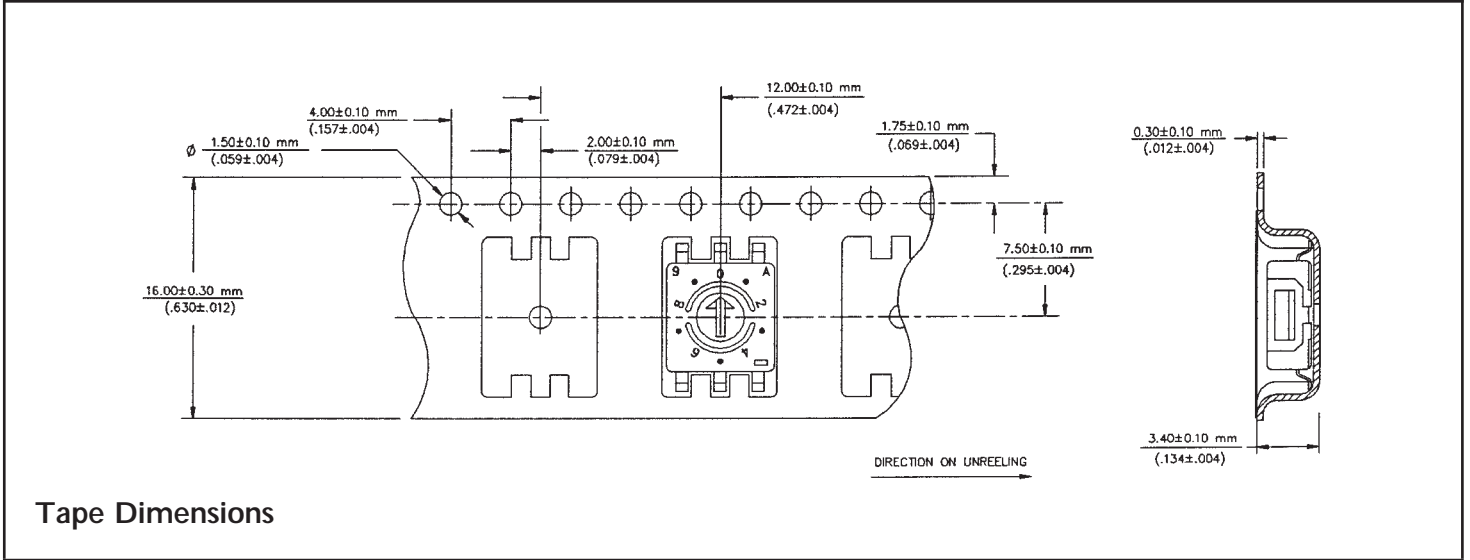
4.30 mm (.169) (TYP. 3 PLCS.)

2.30 mm (.090) (TYP. 6 PLCS.)

1.20 mm (.047) (TYP. 6 PLCS.)

# S-7000

Sealed Surface Mount Coded Switch



**Code Format**

		SELECTOR POSITION															
		16 POSITION, BINARY CODED HEXADECIMAL (BCH)															
		10 POSITION, BINARY CODED DECIMAL (BCD)															
PIN		0	1	2	3	4	5	6	7	8	9	A	B	C	D	E	F
REAL CODE	1		●		●		●		●		●		●		●		●
	2			●	●			●	●			●	●			●	●
	4					●	●	●	●					●	●	●	●
	8									●	●	●	●	●	●	●	●
COMPLEMENTARY CODE	1	●		●		●		●		●		●		●		●	
	2	●	●			●	●			●	●			●	●		
	4	●	●	●	●					●	●	●	●				
	8	●	●	●	●	●	●	●	●								

● CONTACT CLOSED