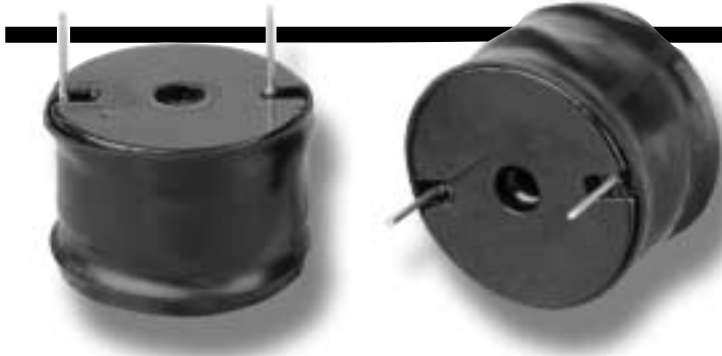


# RL-1256

## RADIAL LEADED POWER LINE CHOKES



The RL-1256 Series of Power Line Chokes is available in 367 standard values covering a wide range of inductance and current. The use of high saturation flux density material make these coils ideal for use in switching regulated power supply applications and wherever high current choke values in a small physical size are needed.

### Typical Applications:

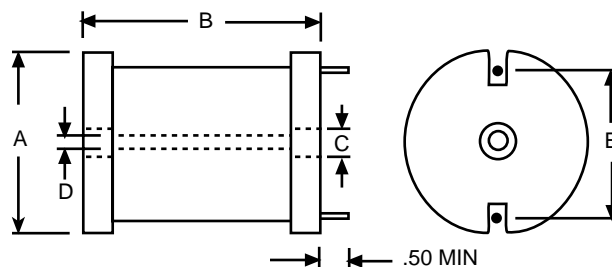
- Switching Regulators
- Power Amplifiers
- Power Supplies
- SCR and Triac Controls
- Speaker Crossover Networks
- RFI Suppression
- Filters

MAXIMUM DIMENSIONS:				
Part No. Type	A	B	C	D
RL-1256-1	.66	.84	.195	Clearance Hole For 4/40 Screw
RL-1256-2	.83	.84	.195	
RL-1256-3	1.10	.84	.195	
RL-1256-4	1.60	1.10	.290	Clearance Hole For 8/32 Screw
RL-1256-5	1.60	1.45	.290	
RL-1256-6	2.00	1.50	.375	Screw With Washer
RL-1256-7	2.40	1.50	.425	
RL-1256-8	2.40	2.50	.425	

REVISED SPEC

NEW

ALL DIMENSIONS IN INCHES



NOTE: See specification tables for "E" dim.



## RENCO ELECTRONICS, INC.

595 International Place, Rockledge, FL 32955-4200 USA

(321) 637-1000 • Toll Free Engineering Hot line 800-645-5828

Fax: (321) 637-1600 Web Site: [www.rencousa.com](http://www.rencousa.com) E-mail: [sales@rencousa.com](mailto:sales@rencousa.com)

<b>RL-1256-1</b>					
Renco Part No.	Inductance ODC (μH)	Max. DCR (Ohms) (DC Amps)	Saturation Current	Rated Current (Amps)	Dimension "E" Approx.
RL-1256-1-1.0	1.0	.003	87.0	9.0	.550
RL-1256-1-1.2	1.2	.003	68.0	9.0	.550
RL-1256-1-1.5	1.5	.004	56.0	9.0	.550
RL-1256-1-1.8	1.8	.004	56.0	9.0	.550
RL-1256-1-2.2	2.2	.005	47.0	9.0	.550
RL-1256-1-2.7	2.7	.005	47.0	9.0	.550
RL-1256-1-3.3	3.3	.005	40.0	9.0	.550
RL-1256-1-3.9	3.9	.006	36.0	9.0	.550
RL-1256-1-4.7	4.7	.007	32.0	9.0	.550
RL-1256-1-5.6	5.6	.007	29.0	9.0	.550
RL-1256-1-6.8	6.8	.008	26.0	9.0	.550
RL-1256-1-8.2	8.2	.009	24.5	9.0	.550
RL-1256-1-10	10.0	.010	21.2	9.0	.550
RL-1256-1-12	12.0	.011	19.0	9.0	.550
RL-1256-1-15	15.0	.015	17.5	7.2	.500
RL-1256-1-18	18.0	.016	16.5	7.2	.500
RL-1256-1-22	22.0	.025	15.8	5.5	.500
RL-1256-1-27	27.0	.030	14.4	4.5	.500
RL-1256-1-33	33.0	.040	13.2	4.0	.406
RL-1256-1-39	39.0	.046	11.8	4.0	.469
RL-1256-1-47	47.0	.062	11.0	2.8	.469
RL-1256-1-56	56.0	.069	10.0	2.8	.485
RL-1256-1-68	68.0	.077	8.9	2.8	.500
RL-1256-1-82	82.0	.083	8.2	2.8	.500
RL-1256-1-100	100.0	.095	7.5	2.8	.500
RL-1256-1-120	120.0	.127	5.8	2.0	.480
RL-1256-1-150	150.0	.181	5.6	1.6	.480
RL-1256-1-180	180.0	.217	5.1	1.6	.480
RL-1256-1-220	220.0	.240	4.3	1.6	.480
RL-1256-1-270	270.0	.300	4.1	1.6	.480
RL-1256-1-330	330.0	.336	3.8	1.3	.480
RL-1256-1-390	390.0	.460	3.3	1.0	.480
RL-1256-1-470	470.0	.636	3.2	0.8	.450
RL-1256-1-560	560.0	.696	2.9	0.8	.450

NOTES:

1. Saturation current lowers inductance 5%
2. Inductance ±10% measured at 1KHz, values below 10μH±20%
3. Leads for PC mounting tinned to within 1/16" of body
4. Non-listed values available on request
5. Coils finished with sleeving UL-VW-1 rated
6. Encapsulated to MIL-T-27D available, see Renco RL-1324 Series
7. Center hole for mechanical mounting
8. 1000VAC RMS hi pot
9. RDC measured @ 20°C
10. Spacer available at additional cost to facilitate PC board washing



## RENCO ELECTRONICS, INC.

✉ 595 International Place, Rockledge, FL 32955-4200 USA

☎ (321) 637-1000 • Toll Free Engineering Hot line 800-645-5828

📠 Fax: (321) 637-1600 🌐 Web Site: www.rencousa.com 📧 E-mail: sales@rencousa.com

<b>RL-1256-2</b>					
Renco Part No.	Inductance ODC (μH)	Max. DCR (Ohms)	Saturation Current (DC Amps)	Rated Current (Amps)	Dimension "E" Approx.
RL-1256-2-1.0	1.0	.003	108.0	11.4	.620
RL-1256-2-1.2	1.2	.003	108.0	11.4	.620
RL-1256-2-1.5	1.5	.003	83.0	11.4	.620
RL-1256-2-1.8	1.8	.003	68.0	11.4	.620
RL-1256-2-2.2	2.2	.004	68.0	11.4	.620
RL-1256-2-2.7	2.7	.005	58.0	11.4	.620
RL-1256-2-3.3	3.3	.005	58.0	11.4	.620
RL-1256-2-3.9	3.9	.005	50.0	11.4	.620
RL-1256-2-4.7	4.7	.005	50.0	11.4	.620
RL-1256-2-5.6	5.6	.006	44.0	11.4	.620
RL-1256-2-6.8	6.8	.007	39.0	11.4	.620
RL-1256-2-8.2	8.2	.007	36.0	11.4	.620
RL-1256-2-10	10.0	.009	30.0	11.4	.620
RL-1256-2-12	12.0	.009	27.0	11.4	.620
RL-1256-2-15	15.0	.013	25.0	9.0	.625
RL-1256-2-18	18.0	.018	22.0	7.2	.630
RL-1256-2-22	22.0	.019	21.0	7.2	.630
RL-1256-2-27	27.0	.026	20.5	5.5	.546
RL-1256-2-33	33.0	.029	18.6	5.5	.546
RL-1256-2-39	39.0	.030	17.0	5.5	.594
RL-1256-2-47	47.0	.035	15.1	5.5	.625
RL-1256-2-56	56.0	.039	13.6	5.5	.625
RL-1256-2-68	68.0	.053	12.7	4.8	.656
RL-1256-2-82	82.0	.060	11.3	4.8	.656
RL-1256-2-100	100.0	.080	10.4	4.0	.593
RL-1256-2-120	120.0	.090	9.4	4.0	.593
RL-1256-2-150	150.0	.098	8.6	4.0	.593
RL-1256-2-180	180.0	.110	7.8	4.0	.671
RL-1256-2-220	220.0	.150	7.0	2.8	.593
RL-1256-2-270	270.0	.213	6.3	2.0	.562
RL-1256-2-330	330.0	.305	5.2	1.6	.590
RL-1256-2-390	390.0	.320	4.9	1.6	.590
RL-1256-2-470	470.0	.355	4.5	1.6	.590
RL-1256-2-560	560.0	.388	4.1	1.6	.590
RL-1256-2-680	680.0	.430	3.7	1.6	.590
RL-1256-2-820	820.0	.590	3.4	1.3	.590
RL-1256-2-1000	1000.0	.818	3.1	1.0	.590
RL-1256-2-1200	1200.0	1.14	2.7	0.8	.590
RL-1256-2-1500	1500.0	1.26	2.4	0.8	.590
RL-1256-2-1800	1800.0	1.39	2.2	0.8	.590
RL-1256-2-2200	2200.0	1.54	2.0	0.8	.590



## RENCO ELECTRONICS, INC.

✉ 595 International Place, Rockledge, FL 32955-4200 USA

☎ (321) 637-1000 • Toll Free Engineering Hot line 800-645-5828

📠 Fax: (321) 637-1600 🌐 Web Site: [www.rencousa.com](http://www.rencousa.com) 📧 E-mail: [sales@rencousa.com](mailto:sales@rencousa.com)

<b>RL-1256-3</b>					
Renco Part No.	Inductance ODC (μH)	Max. DCR (Ohms) (DC Amps)	Saturation Current	Rated Current (Amps)	Dimension "E" Approx.
RL-1256-3-1.0	1.0	.003	116.0	21.0	.800
RL-1256-3-1.2	1.2	.003	116.0	21.0	.800
RL-1256-3-1.5	1.5	.003	116.0	21.0	.800
RL-1256-3-1.8	1.8	.003	90.0	21.0	.800
RL-1256-3-2.2	2.2	.003	90.0	21.0	.800
RL-1256-3-2.7	2.7	.003	74.0	21.0	.800
RL-1256-3-3.3	3.3	.003	74.0	21.0	.800
RL-1256-3-3.9	3.9	.003	62.0	21.0	.800
RL-1256-3-4.7	4.7	.003	54.0	21.0	.800
RL-1256-3-5.6	5.6	.003	54.0	21.0	.800
RL-1256-3-6.8	6.8	.004	47.0	21.0	.800
RL-1256-3-8.2	8.2	.004	42.0	21.0	.800
RL-1256-3-10	10.0	.006	38.0	17.0	.700
RL-1256-3-12	12.0	.008	35.0	13.5	.690
RL-1256-3-15	15.0	.009	32.0	13.5	.690
RL-1256-3-18	18.0	.010	29.0	13.5	.690
RL-1256-3-22	22.0	.011	25.0	13.5	.790
RL-1256-3-27	27.0	.012	23.0	13.5	.790
RL-1256-3-33	33.0	.017	20.0	13.5	.790
RL-1256-3-39	39.0	.022	19.1	11.4	.790
RL-1256-3-47	47.0	.024	19.0	9.0	.750
RL-1256-3-56	56.0	.026	17.5	9.0	.750
RL-1256-3-68	68.0	.029	15.6	9.0	.750
RL-1256-3-82	82.0	.032	14.0	9.0	.750
RL-1256-3-100	100.0	.034	13.2	9.0	.781
RL-1256-3-120	120.0	.046	12.1	7.2	.750
RL-1256-3-150	150.0	.064	10.8	5.5	.781
RL-1256-3-180	180.0	.072	9.7	5.5	.781
RL-1256-3-220	220.0	.080	8.7	5.5	.781
RL-1256-3-270	270.0	.110	7.9	4.5	.750
RL-1256-3-330	330.0	.122	7.1	4.5	.812
RL-1256-3-390	390.0	.169	6.7	4.0	.750
RL-1256-3-470	470.0	.187	6.0	4.0	.750
RL-1256-3-560	560.0	.205	5.5	4.0	.750
RL-1256-3-680	680.0	.256	5.0	2.8	.718
RL-1256-3-820	820.0	.288	4.5	2.8	.843
RL-1256-3-1000	1000.0	.426	4.1	2.0	.750
RL-1256-3-1200	1200.0	.462	3.7	2.0	.750
RL-1256-3-1500	1500.0	.518	3.4	2.0	.750
RL-1256-3-1800	1800.0	.705	2.8	1.6	.770
RL-1256-3-2200	2200.0	1.02	2.5	1.3	.770
RL-1256-3-2700	2700.0	1.14	2.3	1.3	.770
RL-1256-3-3300	3300.0	1.27	2.0	1.3	.750
RL-1256-3-3900	3900.0	1.67	1.8	1.0	.750
RL-1256-3-4700	4700.0	1.86	1.7	1.0	.750



## **RENCO ELECTRONICS, INC.**

✉ 595 International Place, Rockledge, FL 32955-4200 USA

☎ (321) 637-1000 • Toll Free Engineering Hot line 800-645-5828

📠 Fax: (321) 637-1600 🌐 Web Site: [www.rencousa.com](http://www.rencousa.com) 📧 E-mail: [sales@rencousa.com](mailto:sales@rencousa.com)

<b>RL-1256-4</b>					
Renco Part No.	Inductance ODC (μH)	Max. DCR (Ohms)	Saturation Current (DC Amps)	Rated Current (Amps)	Dimension "E" Approx.
RL-1256-4-1.8	1.8	.002	150.0	27.0	1.11
RL-1256-4-2.2	2.2	.002	150.0	27.0	1.11
RL-1256-4-2.7	2.7	.003	115.0	27.0	1.11
RL-1256-4-3.3	3.3	.003	115.0	27.0	1.11
RL-1256-4-3.9	3.9	.003	95.0	27.0	1.11
RL-1256-4-4.7	4.7	.003	95.0	27.0	1.11
RL-1256-4-5.6	5.6	.004	79.0	27.0	1.11
RL-1256-4-6.8	6.8	.004	79.0	27.0	1.11
RL-1256-4-8.2	8.2	.004	69.0	27.0	1.11
RL-1256-4-10	10.0	.005	61.0	27.0	1.11
RL-1256-4-12	12.0	.005	55.0	27.0	1.11
RL-1256-4-15	15.0	.006	49.0	27.0	1.11
RL-1256-4-18	18.0	.008	41.0	27.0	1.11
RL-1256-4-22	22.0	.009	38.0	21.0	1.11
RL-1256-4-27	27.0	.010	36.0	21.0	1.15
RL-1256-4-33	33.0	.011	31.0	21.0	1.15
RL-1256-4-39	39.0	.012	28.0	21.0	1.15
RL-1256-4-47	47.0	.018	27.0	14.4	1.140
RL-1256-4-56	56.0	.019	26.1	14.4	1.140
RL-1256-4-68	68.0	.021	24.4	14.4	1.140
RL-1256-4-82	82.0	.023	22.4	14.4	1.140
RL-1256-4-100	100.0	.025	20.0	14.4	1.140
RL-1256-4-120	120.0	.028	18.0	14.4	1.187
RL-1256-4-150	150.0	.040	16.4	11.4	1.125
RL-1256-4-180	180.0	.045	14.6	11.4	1.125
RL-1256-4-220	220.0	.050	13.2	11.4	1.125
RL-1256-4-270	270.0	.056	11.8	11.4	1.156
RL-1256-4-330	330.0	.074	11.4	11.4	1.125
RL-1256-4-390	390.0	.082	10.1	9.0	1.187
RL-1256-4-470	470.0	.114	9.2	7.2	1.125
RL-1256-4-560	560.0	.125	8.3	7.2	1.125
RL-1256-4-680	680.0	.139	7.6	7.2	1.125
RL-1256-4-820	820.0	.154	6.8	7.2	1.187
RL-1256-4-1000	1000.0	.216	6.2	5.5	1.062
RL-1256-4-1200	1200.0	.232	5.7	5.5	1.156
RL-1256-4-1500	1500.0	.324	5.1	4.5	1.156
RL-1256-4-1800	1800.0	.360	4.6	4.5	1.156
RL-1256-4-2200	2200.0	.494	4.2	4.0	1.062
RL-1256-4-2700	2700.0	.555	3.8	4.0	1.062
RL-1256-4-3300	3300.0	.773	3.4	2.8	1.062
RL-1256-4-3900	3900.0	.845	3.1	2.8	1.125
RL-1256-4-4700	4700.0	1.14	2.9	2.0	1.11
RL-1256-4-5600	5600.0	1.60	2.5	2.0	1.11
RL-1256-4-6800	6800.0	1.76	2.3	1.6	1.11
RL-1256-4-8200	8200.0	1.95	2.0	1.6	1.16
RL-1256-4-10000	10000.0	2.76	1.8	1.3	1.16
RL-1256-4-12000	12000.0	3.04	1.7	1.3	1.16
RL-1256-4-15000	15000.0	3.39	1.5	1.3	1.16



## RENCO ELECTRONICS, INC.

✉ 595 International Place, Rockledge, FL 32955-4200 USA

☎ (321) 637-1000 • Toll Free Engineering Hot line 800-645-5828

☎ Fax: (321) 637-1600 🌐 Web Site: [www.rencousa.com](http://www.rencousa.com) ✉ E-mail: [sales@rencousa.com](mailto:sales@rencousa.com)

<b>RL-1256-5</b>					
Renco Part No.	Inductance ODC (μH)	Max. DCR (Ohms) (DC Amps)	Saturation Current	Rated Current (Amps)	Dimension "E" Approx.
RL-1256-5-1.8	1.8	.002	155.0	35.0	1.11
RL-1256-5-2.2	2.2	.002	155.0	35.0	1.11
RL-1256-5-2.7	2.7	.002	125.0	35.0	1.11
RL-1256-5-3.3	3.3	.002	125.0	35.0	1.11
RL-1256-5-3.9	3.9	.003	102.0	35.0	1.11
RL-1256-5-4.7	4.7	.003	87.0	35.0	1.11
RL-1256-5-5.6	5.6	.003	87.0	35.0	1.11
RL-1256-5-6.8	6.8	.003	87.0	35.0	1.11
RL-1256-5-8.2	8.2	.003	76.0	35.0	1.11
RL-1256-5-10	10.0	.004	67.0	35.0	1.11
RL-1256-5-12	12.0	.004	60.0	35.0	1.16
RL-1256-5-15	15.0	.005	49.0	35.0	1.16
RL-1256-5-18	18.0	.007	45.0	27.0	1.16
RL-1256-5-22	22.0	.007	42.0	27.0	1.16
RL-1256-5-27	27.0	.008	35.0	27.0	1.16
RL-1256-5-33	33.0	.009	34.0	27.0	1.16
RL-1256-5-39	39.0	.010	30.0	27.0	1.16
RL-1256-5-47	47.0	.011	28.0	27.0	1.16
RL-1256-5-56	56.0	.013	26.0	21.0	1.16
RL-1256-5-68	68.0	.015	23.0	21.0	1.25
RL-1256-5-82	82.0	.017	20.0	21.0	1.28
RL-1256-5-100	100.0	.018	19.0	21.0	1.25
RL-1256-5-120	120.0	.022	18.0	17.0	1.16
RL-1256-5-150	150.0	.025	16.0	17.0	1.16
RL-1256-5-180	180.0	.035	14.0	13.5	1.10
RL-1256-5-220	220.0	.040	13.0	13.5	1.10
RL-1256-5-270	270.0	.044	11.0	13.5	1.10
RL-1256-5-330	330.0	.049	10.0	13.5	1.11
RL-1256-5-390	390.0	.070	9.7	11.4	1.15
RL-1256-5-470	470.0	.078	8.8	11.4	1.07
RL-1256-5-560	560.0	.105	8.1	9.0	1.07
RL-1256-5-680	680.0	.115	7.4	9.0	1.07
RL-1256-5-820	820.0	.127	6.7	9.0	1.12
RL-1256-5-1000	1000.0	.176	6.1	7.2	1.12
RL-1256-5-1200	1200.0	.195	5.5	7.2	1.12
RL-1256-5-1500	1500.0	.274	5.0	5.5	1.12
RL-1256-5-1800	1800.0	.302	4.5	5.5	1.13
RL-1256-5-2200	2200.0	.338	4.1	5.5	1.16
RL-1256-5-2700	2700.0	.459	3.7	4.5	1.02
RL-1256-5-3300	3300.0	.642	3.4	4.0	1.02
RL-1256-5-3900	3900.0	.699	3.0	4.0	1.14
RL-1256-5-4700	4700.0	.775	2.8	4.0	1.14
RL-1256-5-5600	5600.0	.843	2.6	4.0	1.14
RL-1256-5-6800	6800.0	1.15	2.3	2.8	1.06
RL-1256-5-8200	8200.0	1.26	2.1	2.8	1.16
RL-1256-5-10000	10000.0	1.74	1.9	2.0	1.13
RL-1256-5-12000	12000.0	1.92	1.7	2.0	1.13
RL-1256-5-15000	15000.0	2.17	1.5	2.0	1.13



## RENCO ELECTRONICS, INC.

✉ 595 International Place, Rockledge, FL 32955-4200 USA

☎ (321) 637-1000 • Toll Free Engineering Hot line 800-645-5828

📠 Fax: (321) 637-1600 🌐 Web Site: [www.rencousa.com](http://www.rencousa.com) 📧 E-mail: [sales@rencousa.com](mailto:sales@rencousa.com)

<b>RL-1256-6</b>					
Renco Part No.	Inductance ODC ( $\mu$ H)	Max. DCR (Ohms) (DC Amps)	Saturation Current	Rated Current (Amps)	Dimension "E" Approx.
RL-1256-6-4.7	4.7	.002	149.9	35.0	1.40
RL-1256-6-5.6	5.6	.002	122.7	35.0	1.40
RL-1256-6-6.8	6.8	.003	103.8	35.0	1.40
RL-1256-6-8.2	8.2	.003	90.0	35.0	1.40
RL-1256-6-10	10.0	.003	79.4	35.0	1.48
RL-1256-6-12	12.0	.004	71.0	35.0	1.48
RL-1256-6-15	15.0	.004	64.3	35.0	1.48
RL-1256-6-18	18.0	.005	58.7	35.0	1.48
RL-1256-6-22	22.0	.005	54.0	35.0	1.48
RL-1256-6-27	27.0	.006	50.0	35.0	1.48
RL-1256-6-33	33.0	.006	46.5	35.0	1.48
RL-1256-6-39	39.0	.006	43.5	35.0	1.48
RL-1256-6-47	47.0	.008	40.9	35.0	1.48
RL-1256-6-56	56.0	.009	36.5	35.0	1.48
RL-1256-6-68	68.0	.009	32.9	35.0	1.48
RL-1256-6-82	82.0	.010	30.0	35.0	1.48
RL-1256-6-100	100.0	.014	26.5	27.0	1.53
RL-1256-6-120	120.0	.015	24.5	27.0	1.53
RL-1256-6-150	150.0	.023	21.4	21.0	1.49
RL-1256-6-180	180.0	.025	19.5	21.0	1.49
RL-1256-6-220	220.0	.028	18.0	21.0	1.49
RL-1256-6-270	270.0	.030	16.2	21.0	1.49
RL-1256-6-330	330.0	.040	14.8	17.0	1.31
RL-1256-6-390	390.0	.055	13.6	13.5	1.31
RL-1256-6-470	470.0	.061	12.3	13.5	1.31
RL-1256-6-560	560.0	.068	11.3	13.5	1.40
RL-1256-6-680	680.0	.094	10.3	11.4	1.42
RL-1256-6-820	820.0	.104	9.4	11.4	1.42
RL-1256-6-1000	1000.0	.143	8.5	9.0	1.36
RL-1256-6-1200	1200.0	.156	7.7	9.0	1.36
RL-1256-6-1500	1500.0	.219	6.8	7.2	1.31
RL-1256-6-1800	1800.0	.241	6.3	7.2	1.31
RL-1256-6-2200	2200.0	.270	5.7	7.2	1.40
RL-1256-6-2700	2700.0	.364	5.1	5.5	1.36
RL-1256-6-3300	3300.0	.498	4.6	4.5	1.24
RL-1256-6-3900	3900.0	.548	4.2	4.5	1.32
RL-1256-6-4700	4700.0	.608	3.9	4.5	1.32
RL-1256-6-5600	5600.0	.671	3.5	4.5	1.36
RL-1256-6-6800	6800.0	.750	3.2	4.5	1.40
RL-1256-6-8200	8200.0	1.03	2.9	4.0	1.45
RL-1256-6-10000	10000.0	1.16	2.6	4.0	1.45
RL-1256-6-12000	12000.0	1.54	2.4	2.8	1.40
RL-1256-6-15000	15000.0	1.75	2.2	2.8	1.40
RL-1256-6-18000	18000.0	1.94	2.0	2.8	1.45
RL-1256-6-22000	22000.0	2.74	1.8	2.0	1.37
RL-1256-6-27000	27000.0	3.71	1.6	1.7	1.37
RL-1256-6-33000	33000.0	4.16	1.5	1.7	1.37
RL-1256-6-39000	39000.0	5.56	1.4	1.4	1.35
RL-1256-6-47000	47000.0	6.19	1.2	1.4	1.35



## RENCO ELECTRONICS, INC.

✉ 595 International Place, Rockledge, FL 32955-4200 USA

☎ (321) 637-1000 • Toll Free Engineering Hot line 800-645-5828

📠 Fax: (321) 637-1600 🌐 Web Site: [www.rencousa.com](http://www.rencousa.com) 📧 E-mail: [sales@rencousa.com](mailto:sales@rencousa.com)

<b>RL-1256-7</b>					
Renco Part No.	Inductance ODC (µH)	Max. DCR (Ohms)	Saturation Current (DC Amps)	REVISED Rated Current (Amps)	Dimension "E" Approx.
RL-1256-7-5.6	5.6	.0018	200.0	45	1.60
RL-1256-7-6.8	6.8	.0021	163.0	45	1.60
RL-1256-7-8.2	8.2	.0022	163.0	45	1.60
RL-1256-7-10	10.0	.0024	138.0	45	1.60
RL-1256-7-12	12.0	.0025	120.0	45	1.60
RL-1256-7-15	15.0	.0028	105.0	42	1.70
RL-1256-7-18	18.0	.0032	94.0	40	1.70
RL-1256-7-22	22.0	.0036	85.0	38	1.70
RL-1256-7-27	27.0	.0042	78.0	38	1.70
RL-1256-7-33	33.0	.0045	72.0	37	1.70
RL-1256-7-39	39.0	.0048	66.0	36	1.80
RL-1256-7-47	47.0	.0057	58.0	35	1.80
RL-1256-7-56	56.0	.0069	54.0	35	1.80
RL-1256-7-68	68.0	.0078	48.0	35	1.80
RL-1256-7-82	82.0	.0093	43.0	35	1.80
RL-1256-7-100	100.0	.0103	40.0	27	1.80
RL-1256-7-120	120.0	.0108	36.0	27	1.80
RL-1256-7-150	150.0	.0120	32.0	25	1.80
RL-1256-7-180	180.0	.0156	31.0	22	1.80
RL-1256-7-220	220.0	.0168	28.0	22	1.80
RL-1256-7-270	270.0	.0228	24.0	21.0	1.80
RL-1256-7-330	330.0	.0300	23.0	17.0	1.80
RL-1256-7-390	390.0	.0432	21.0	13.5	1.70
RL-1256-7-470	470.0	.0456	19.7	13.5	1.70
RL-1256-7-560	560.0	.0480	17.4	13.5	1.75
RL-1256-7-680	680.0	.0516	15.9	12.0	1.80
RL-1256-7-820	820.0	.0648	14.0	11.5	1.80
RL-1256-7-1000	1000.0	.0936	12.7	10.0	1.75
RL-1256-7-1200	1200.0	.1020	11.9	9.5	1.78
RL-1256-7-1500	1500.0	.1176	10.9	8.0	1.80
RL-1256-7-1800	1800.0	.1536	10.1	7.5	1.70
RL-1256-7-2200	2200.0	.2160	8.9	7.2	1.70
RL-1256-7-2700	2700.0	.2424	8.0	6.0	1.75
RL-1256-7-3300	3300.0	.2640	7.1	5.5	1.80
RL-1256-7-3900	3900.0	.3480	6.8	5.2	1.75
RL-1256-7-4700	4700.0	.3924	6.1	5.0	1.78
RL-1256-7-5600	5600.0	.4320	5.6	4.7	1.80
RL-1256-7-6800	6800.0	.5940	5.0	4.5	1.70
RL-1256-7-8200	8200.0	.6600	4.6	4.0	1.75
RL-1256-7-10000	10000.0	.7560	4.0	4.0	1.80
RL-1256-7-12000	12000.0	.9840	3.7	3.5	1.80
RL-1256-7-15000	15000.0	1.416	3.0	2.8	1.75
RL-1256-7-18000	18000.0	1.524	2.8	2.8	1.78
RL-1256-7-22000	22000.0	1.800	2.7	2.3	1.80
RL-1256-7-27000	27000.0	2.376	2.5	2.0	1.75
RL-1256-7-33000	33000.0	2.640	2.2	1.9	1.80
RL-1256-7-39000	39000.0	3.576	2.1	1.6	1.75
RL-1256-7-47000	47000.0	3.936	1.9	1.6	1.78
RL-1256-7-56000	56000.0	4.320	1.7	1.5	1.80
RL-1256-7-68000	68000.0	5.220	1.5	1.3	1.85



## RENCO ELECTRONICS, INC.

✉ 595 International Place, Rockledge, FL 32955-4200 USA

☎ (321) 637-1000 • Toll Free Engineering Hot line 800-645-5828

📠 Fax: (321) 637-1600 🌐 Web Site: [www.rencousa.com](http://www.rencousa.com) 📧 E-mail: [sales@rencousa.com](mailto:sales@rencousa.com)



<b>RL-1256-8</b>					
Renco Part No.	Inductance ODC (μH)	Max. DCR (Ohms)	Saturation Current (DC Amps)	Rated Current (Amps)	Dimension "E" Approx.
RL-1256-8-5.6	5.6	.0012	233	55	*
RL-1256-8-6.8	6.8	.0013	197	55	*
RL-1256-8-8.2	8.2	.0015	171	55	*
RL-1256-8-10	10.0	.0017	170	55	*
RL-1256-8-12	12.0	.0020	150	55	*
RL-1256-8-15	15.0	.0021	135	55	*
RL-1256-8-18	18.0	.0023	122	55	*
RL-1256-8-22	22.0	.0025	111	55	*
RL-1256-8-27	27.0	.0026	102	55	*
RL-1256-8-33	33.0	.0029	95.0	55	*
RL-1256-8-39	39.0	.0033	83	55	*
RL-1256-8-47	47.0	.0035	77	55	*
RL-1256-8-56	56.0	.0039	69	55	*
RL-1256-8-68	68.0	.0043	62	50	*
RL-1256-8-82	82.0	.0048	57	45	*
RL-1256-8-100	100.0	.0052	52	40	*
RL-1256-8-120	120.0	.0071	48	39	*
RL-1256-8-150	150.0	.0079	43	38	*
RL-1256-8-180	180.0	.0087	39	37	*
RL-1256-8-220	220.0	.0120	35	33	*
RL-1256-8-270	270.0	.014	32	30	*
RL-1256-8-330	330.0	.018	29	27	1.80
RL-1256-8-390	390.0	.020	27	25	1.70
RL-1256-8-470	470.0	.028	24	21	1.70
RL-1256-8-560	560.0	.031	22	20	1.75
RL-1256-8-680	680.0	.034	20	19	1.80
RL-1256-8-820	820.0	.047	18	16	1.80
RL-1256-8-1000	1000.0	.052	16	15.5	1.75
RL-1256-8-1200	1200.0	.057	15	15	1.78
RL-1256-8-1500	1500.0	.080	13	13	1.80
RL-1256-8-1800	1800.0	.088	12	12	1.70
RL-1256-8-2200	2200.0	.122	11	10	1.70
RL-1256-8-2700	2700.0	.135	10	10	1.75
RL-1256-8-3300	3300.0	.188	9	8	1.80
RL-1256-8-3900	3900.0	.205	8	8	1.75
RL-1256-8-4700	4700.0	.283	7.7	6.7	1.78
RL-1256-8-5600	5600.0	.309	7.0	6.4	1.80
RL-1256-8-6800	6800.0	.431	6.4	5.4	1.70
RL-1256-8-8200	8200.0	.472	5.8	5.2	1.75
RL-1256-8-10000	10000.0	.521	5.2	5.0	1.80
RL-1256-8-12000	12000.0	.717	4.8	4.2	1.80
RL-1256-8-15000	15000.0	.803	4.3	4.0	1.75
RL-1256-8-18000	18000.0	1.111	3.9	3.4	1.78
RL-1256-8-22000	22000.0	1.228	3.5	3.2	1.80
RL-1256-8-27000	27000.0	1.716	3.2	2.7	1.75
RL-1256-8-33000	33000.0	1.896	2.9	2.6	1.80
RL-1256-8-39000	39000.0	2.590	2.6	2.3	1.75
RL-1256-8-47000	47000.0	2.840	2.4	2.2	1.78
RL-1256-8-56000	56000.0	3.104	2.2	2.1	1.80
RL-1256-8-68000	68000.0	4.331	2.0	1.7	1.85
RL-1256-8-82000	82000.0	4.756	1.8	1.6	1.90
RL-1256-8-100000	100000.0	6.652	1.6	1.4	1.95

\* Inductors wound with 2 strands of wire. Consult Engineering for dimension.



## RENCO ELECTRONICS, INC.

✉ 595 International Place, Rockledge, FL 32955-4200 USA

☎ (321) 637-1000 • Toll Free Engineering Hot line 800-645-5828

📠 Fax: (321) 637-1600 🌐 Web Site: [www.rencousa.com](http://www.rencousa.com) 📧 E-mail: [sales@rencousa.com](mailto:sales@rencousa.com)